

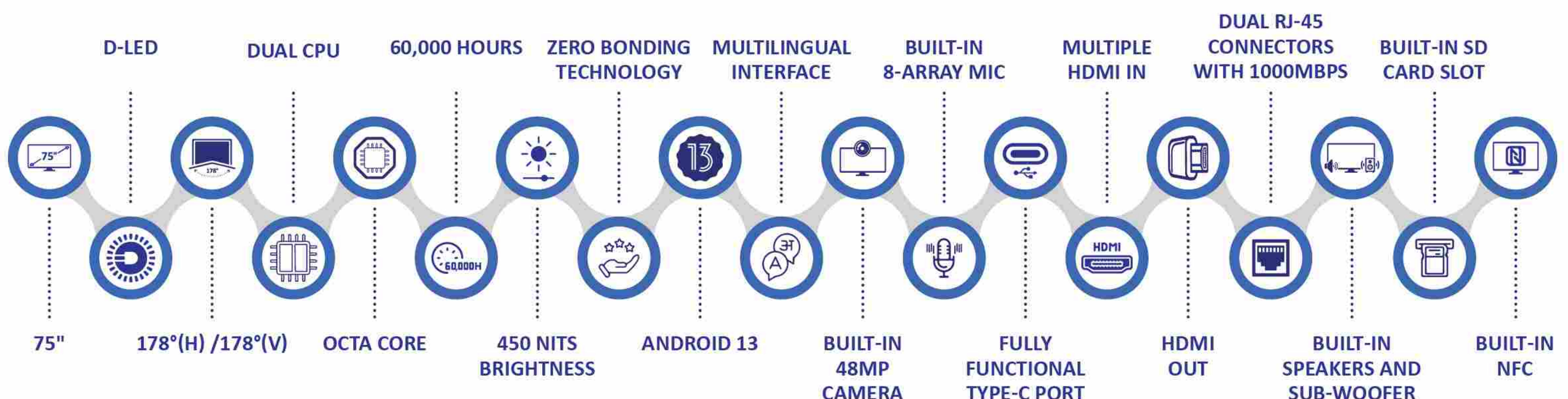


75" 4K Ultra HD Interactive Flat Panel Display

Model
ADIC-A75

FEATURES

- 75" 4K RESOLUTION IPS INTERACTIVE FLAT PANEL DISPLAY WITH 178°(H) /178°(V) WIDE VIEWING ANGLE.
- UNPARALLELED PERFORMANCE OF DUAL CPU WITH OCTA CORE FOR ULTIMATE COMPUTING PERFORMANCE.
- DISPLAY LONGEVITY OF 60,000 HOURS AND A BRIGHTNESS OF 450 NITS, IDEAL FOR EXTENDED USAGE.
- ZERO-BONDING TECHNOLOGY TO PROVIDE A GLARE-FREE, SUPERIOR WRITING EXPERIENCE TO USERS.
- MULTILINGUAL USER INTERFACE INCLUDING REGIONAL LANGUAGES HINDI, ENGLISH AND MORE.
- BUILT-IN 48MP CAMERA AND 8-ARRAY MIC FOR BRINGING VIRTUAL CLASSROOMS TO LIFE.
- MATHEMATICAL TOOLS: RULER, COMPASS, PROTECTOR & OTHER MATHEMATICAL TOOLS.
- CONTROLS APPLICATION SETTINGS, ENABLING OR DISABLING, RUNNING OR UNINSTALLING.
- INTEGRATED AI TOOLS: AI TOOLS INCORPORATED FOR ENHANCED FUNCTIONALITY.
- IN-BUILT LIBRARY: LIBRARY OF RESOURCES INTEGRATED INTO THE SOFTWARE.
- SEND MESSAGES OR ALERTS INDIVIDUALLY OR TO MULTIPLE DEVICES.
- HIGH-ACCURACY TOUCH SCREEN WITH 2.0MM PRECISION WRITING.
- NATURAL WRITING EXPERIENCE WITH PALM REST FEATURE.
- REAL-TIME SCREEN CONTROL, VIEWING & SCREENSHOTS.
- DEVICE-LEVEL USAGE HISTORY AND REPORTS.
- SCREEN LOCK MANAGEMENT SYSTEM.



75" 4K ULTRA HD INTERACTIVE FLAT PANEL DISPLAY

Introducing the AVAIVI 75-inch 4K Ultra HD Interactive Flat Panel Display – an innovative solution that redefines the way you interact with information and collaborate in any environment. This cutting-edge display seamlessly combines stunning visuals with advanced touch technology to deliver an unparalleled interactive experience.



75 INCH 4K RESOLUTION IPS (IFPD)

Step into a world of vivid detail and precision with our 75" Interactive Flat Panel (IFP). The 4K resolution IPS display ensures razor-sharp images and lifelike colors, creating an immersive experience for presentations, collaborations, and educational sessions. Whether you're in a boardroom, classroom, or any interactive setting, the expansive 75" screen transforms every interaction into a captivating visual journey. Bring your content to life and make a lasting impact with this cutting-edge display technology.

D-LED



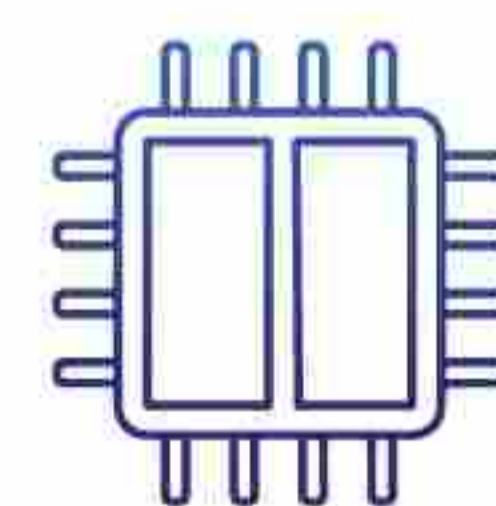
Experience innovation at your fingertips with our IFP's advanced D-LED technology. Seamlessly navigate an intuitive touchscreen interface that harmonizes with the brilliance of a high-resolution 4K IPS screen. Elevate your interactive experience and redefine visual excellence.



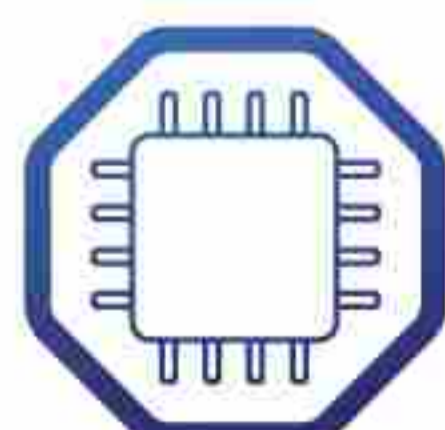
178°(H) / 178°(V)

Indulge in a visual treat with our Interactive Flat Panel's exceptional 178°(H) / 178°(V) wide viewing angle. This expansive perspective ensures that everyone in the room, no matter where they're seated, can enjoy consistent and vibrant visuals. Whether you're collaborating on a project, delivering a presentation, or immersing yourself in content, the broad viewing angle guarantees an optimal visual experience for everyone in the room. Say goodbye to restricted views – embrace a display that captivates every corner.

DUAL CPU



Experience unparalleled processing power with our Interactive Flat Panel's Dual CPU configuration. This dual-core architecture ensures seamless multitasking, swift responsiveness, and the capability to handle demanding applications effortlessly. Elevate your interactive experience with the robust performance of a Dual CPU setup, making every interaction smooth, swift, and efficient.



OCTA CORE

Unleash unrivalled computing prowess with our Interactive Flat Panel's Octa-Core configuration. Featuring eight powerful cores, this setup delivers exceptional speed, responsiveness, and the ability to handle complex tasks with ease. Elevate your interactive sessions, presentations, and collaborative efforts with the formidable processing capabilities of Octa-Core technology. Experience a new level of efficiency and performance in your interactive display.

60,000 HOURS

Embark on a visual journey with confidence, knowing that our display boasts an impressive longevity of 60,000 hours. This means sustained brilliance over extended periods, ensuring enduring performance and reliability for your interactive experiences. Whether it's for presentations, collaborative sessions, or educational use, trust in a display that stands the test of time, delivering consistent quality for 60,000 hours of visual excellence.

**450 NITS BRIGHTNESS**

Immerse yourself in vibrant clarity with our display's 450 nits brightness. Enhanced by an intelligent auto sensor, it dynamically adjusts to ambient light conditions, ensuring optimal visibility and a captivating viewing experience in any environment. Unleash the perfect balance of brightness and adaptability, where your visuals shine brilliantly, guided by smart, responsive technology.

ZERO BONDING TECHNOLOGY

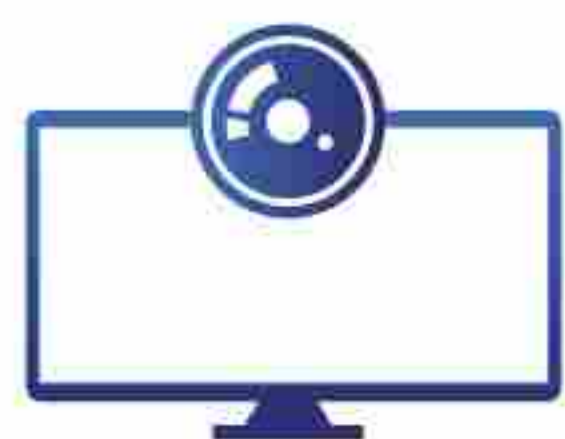
Elevate your writing experience with our cutting-edge Zero-bonding Technology. Enjoy a glare-free and superior writing experience that eliminates distractions and enhances precision. Immerse yourself in a world where the display disappears, leaving only your thoughts and ideas to flow seamlessly onto the screen. Transform your interaction into a smooth, immersive, and distraction-free creative process. Enjoy crystal-clear images and responsiveness, as the Zero Bonding Technology ensures precision and clarity for an unparalleled viewing encounter. Elevate your interaction and immerse yourself in a world where technology disappears, and content comes to life.

13**ANDROID-13**

Immerse yourself in cutting-edge technology with our Interactive Flat Panel (IFP), featuring the latest version of the Android operating system i.e. Android 13. Enjoy a seamless and intuitive user experience, enhanced security features, and access to a vast ecosystem of applications for a truly modern and efficient interactive display solution. Stay up-to-date with the advancements and unlock the full potential of your IFP with Android 13 version.

MULTILINGUAL INTERFACE

Experience inclusivity with our Interactive Flat Panel's Multilingual User Interface, catering to a diverse audience with support for regional languages such as Hindi and English, among others. Enjoy a seamless and user-friendly interface that transcends language barriers, ensuring everyone can navigate and engage effortlessly. Empower your interactive experience with linguistic versatility, creating an inclusive environment for users of various language preferences.



BUILT-IN 48MP CAMERA

Capture every detail with precision using the built-in 48MP camera on our device. Whether you're engaging in video conferences, virtual classrooms, or creative content creation, this high-resolution camera ensures crystal-clear images, bringing clarity and vividness to your visual communication. Elevate your interactive experience with a powerful camera that's ready to capture every moment with stunning clarity.

BUILT-IN 8-ARRAY MIC



Experience immersive virtual classrooms with the built-in 8-array microphone system. Our technology ensures clear and crisp audio, fostering engaging discussions and effective communication. Bring lessons to life with superior sound quality, creating a dynamic and interactive learning environment for students and educators alike. Elevate your virtual classroom experience with the power of advanced audio technology.



FULLY FUNCTIONAL TYPE-C PORT

Seamless connectivity awaits with our fully functional Type-C port. Enjoy swift data transfers, versatile device compatibility, and efficient charging capabilities. This feature adds a new dimension to your interactive experience, providing convenience and flexibility for a diverse range of connectivity needs. Stay connected and productive with the enhanced capabilities of our fully functional Type-C port.

MULTIPLE HDMI IN



Amplify your connectivity possibilities with multiple HDMI-In ports. Effortlessly link various external devices such as laptops, gaming consoles, and more, allowing for simultaneous and hassle-free integration of diverse content sources. This feature enhances the flexibility of your interactive setup, ensuring a seamless and dynamic user experience with the convenience of multiple HDMI-In ports. Connect, collaborate, and engage with ease.



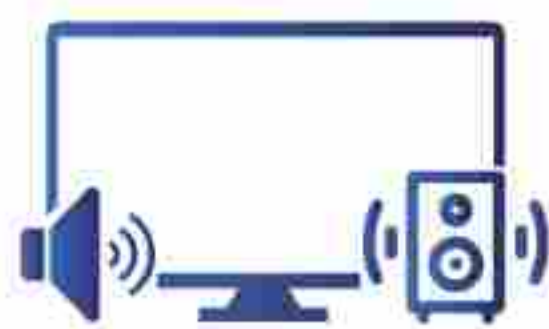
HDMI OUT

Extend your visual experience with the HDMI Out port, allowing you to effortlessly connect and mirror your display on external monitors or projectors. Whether you're presenting, collaborating, or enjoying multimedia content, the HDMI Out port adds versatility to your interactive setup, ensuring your content reaches a broader audience with ease. Amplify your connectivity options and make a lasting impression with the convenience of HDMI Out.

DUAL RJ-45 CONNECTORS WITH 1000MBPS



Experience enhanced networking capabilities with our device featuring dual RJ-45 ports, each supporting 1000Mbps. This dual Gigabit Ethernet connectivity ensures seamless and high-speed data transfer, making it ideal for demanding tasks such as video streaming, online collaboration, and large file transfers. Elevate your connectivity standards with the efficiency and reliability offered by our dual RJ-45 ports, providing a robust solution for your networking needs.



BUILT-IN SPEAKERS AND SUB-WOOFER

Immerse yourself in rich and powerful audio with our Interactive Flat Panel's built-in sound system. Featuring dual speakers at 20W each and an additional 20W subwoofer, this audio setup delivers a total of 60W of premium sound quality. Whether you're engaged in presentations, virtual classes, or entertainment, experience clear, immersive audio that complements the stunning visuals for a complete sensory experience. Elevate your interactive sessions with the dynamic and robust sound performance of our built-in speakers and subwoofer.



BUILT-IN SD CARD SLOT

Simplify your data transfer process with the convenience of a built-in SD card slot. Effortlessly access and transfer your files, photos, and multimedia directly from your SD card, eliminating the need for external adapters or devices. With this feature, enhance the versatility of your interactive flat panel and streamline your workflow by easily sharing and accessing content.



BUILT-IN NFC

Enhance security and streamline access control with the built-in NFC functionality designed for locking and unlocking your Interactive Flat Panel (IFP). With a simple tap, seamlessly manage device access, ensuring a secure and efficient interactive experience. Elevate your control mechanisms and user convenience with the integrated NFC feature tailored for locking and unlocking your IFP.

75" 4K ULTRA HD INTERACTIVE FLAT PANEL DISPLAY

DISPLAY	
Display Size	75" (190.5 cm)
Panel	4K IPS Panel
Backlight Type	D-LED
Resolution Pixels	3840 x 2160
Brightness	450cd/m ² (typ.)
Contrast Ratio	1200:1(typ.)
Response Time	8ms (typ.)
Pixel Pitch(mm)	0.4296(H)x0.4296(V)
Refreshing Frequency	60Hz
Viewing Angle	178°(H) / 178°(V)
Lifespan	60,000 hrs (min.)
Color Gamut (X% NTSC)	72%
View Area in mm	1649.664(H)x927.936(V)
Display Colors	1.07G(8bit+FRC)
TOUCH	
Touch Technology Type	Infrared touch technology
Attachment Method	Zero bonding
Infrared Touch	20 Points Andorid & 40 Points Window
Writing Mode	Finger + Pen
Connect Type	USB2.0 Full Speed
Surface Protection	4mm Toughened Glass
Interpolation Resolution	32768 x 32768
Touch Accuracy	95% ±1mm
Response Time	≤5ms
Output Mode	HID Standard
Theory Clicks	Unlimited
Minimum Touch Object	2.0mm(Single touch ≥2.0mm) & 2.8mm(Multiple touch ≥2.8mm)
Surface Hardness	9H

BUILT-IN SYSTEM	
Operating System	Android 13
CPU	Cortex A73+A53
CPU Frequency	Max 2.2GHz
Core	4+4 Octa-core
GPU	Mali-G52 MP8
RAM	4GB DDR4
ROM	64GB
SD-Card Slot	Supported Up to 1TB
REAR INTERFACE	
HDMI In	2x HDMI: HDMI 2.1 Up to 3840x2160@60Hz, HDMI-1 ARC & CEC & HDMI-2 CEC
HDMI Out	1x HDMI: HDMI 2.0 Up to 3840x2160@60Hz (All signals can be Loop-outed by HDMI Out)
Touch-USB (HDMI)	2x USB3.0: Type-B
DP In	1x DP: DP1.2a Up to 3840x2160@60Hz
Touch USB (DP)	1x USB3.0: Type-B
VGA	1x VGA: VGA DB15 Up to 1920x1080@60Hz, (Input Impedance: 75Ω, Level: 0.7 ± 0.15Vp-p)
USB2.0	1x USB2.0: Type-A
USB3.0	2x USB3.0: Type-A
LAN	2x RJ-45: 10M/100M/1000M Base-T
MIC IN	1x Φ3.5mm: Mini interface
RS232 IN	1x Interface: DB9
SPDIF OUT	1x Interface: Max speed: 16Mbps (Optical)
Audio IN	1x Φ3.5mm : Input level: 0.2-2Vrms (L/R)
Audio OUT	1x Φ3.5mm : Output level: 110±40mVrms (@500mVrms,1KHZ, load 32Ω)
FRONT INTERFACE	
Type-C	1x Type-C: Power output: 65W(20V/3.25A), Up to 3840x2160@60Hz, Support DRP mode
USB3.0	2x USB3.0: Type-A
Touch-USB (HDMI)	NIL
HDMI In	NIL
FUNCTION	
Operating Frequency	2.4GHz & 5GHz
Integrated Standard	802.11a/b/g/n/ac
Bluetooth	2.1+EDR/4.2/5.1

Hotspot	Supported
Built-in Camera	48MP Camera
Max. Resolution	3840*2160(30fps)
Auto Control	Support AWB
Field of View	H: 89°, V: 52°, D: 103°
Built-in Array Mic	8 Array
Pick-up Distance	8Mtr
Echo Cancellation	Support
Speaker	2x20W/8Ω
Woofers	1x20W
Fingerprint scanner	NIL
NFC Support	Card: MIFARE FeliCa, Read-write distance: <30mm, Read/write speed: 106 To 424kbps

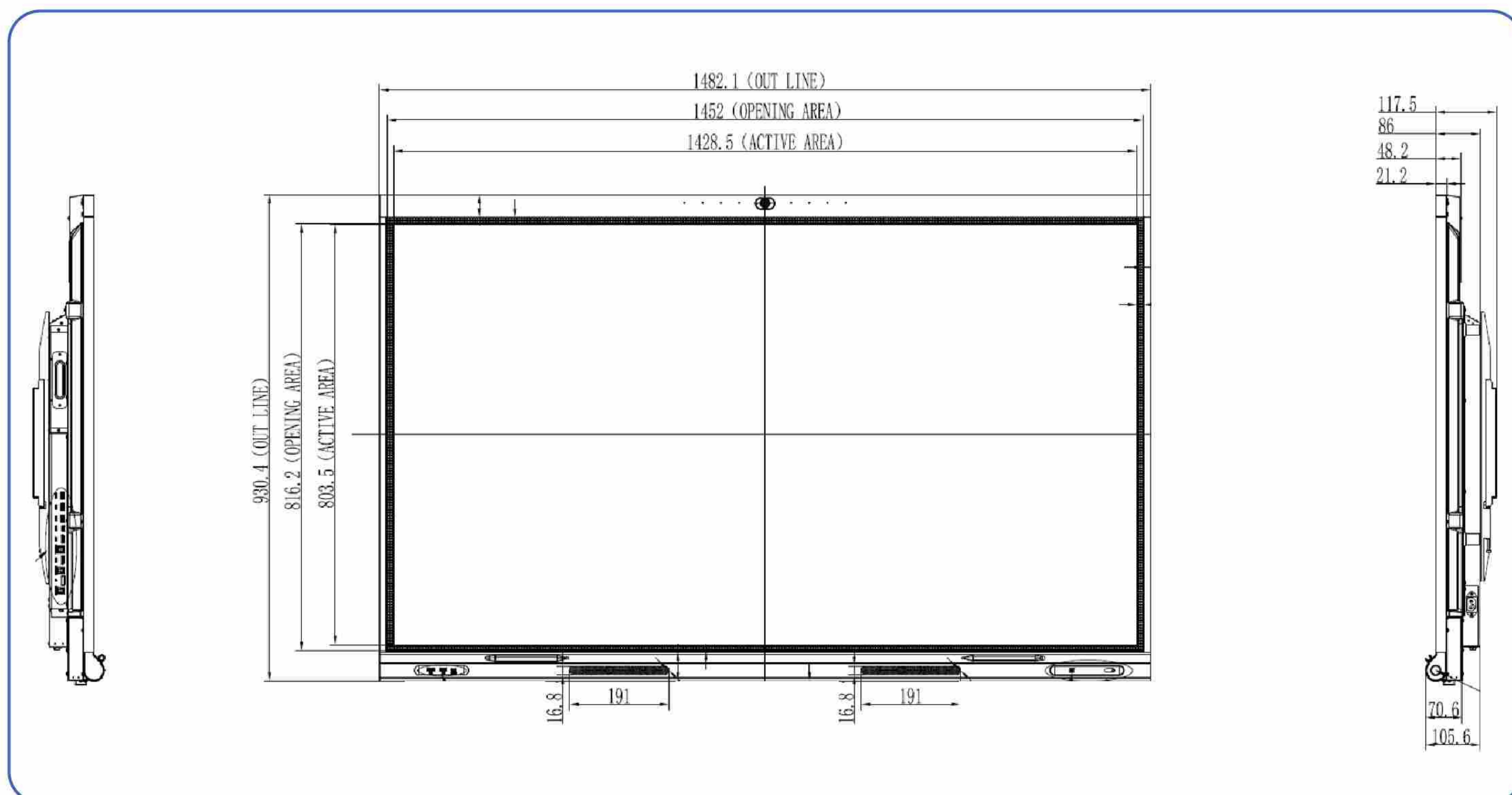
GENERAL

Power Supply	AC 100V ~ 240 V, 50/60 Hz
Power Consumption Without OPS	380W
Standby Condition	<0.5W
OPS Power	DC 18V/5A
Product Size W x D x H	1716.5mmx105.6mmx1069.7mm
Package Size W x D x H	1900mmx225mmx1160mm
Housing Material	Metal
Operating Temperature	-10°C to +45 °C (+32 °F to +104 °F)
Storage Temperature	-20 °C to +60 °C (+14 °F to +122 °F)
Operating Humidity	10%–90% (RH)
Storage Humidity	10%–90% (RH)

ACCESSORIES

Passive Stylus Pen	2
Remote Control	1
Power Cord	1
USB A-B Cable (3Mtr)	1
HDMI Cable (3Mtr)	1
Wall Mount	1

EXPLODED VIEW



ABOUT AVAIVI

AVAIVI is a dynamic and innovative DPIIT recognised Startup Company for its commitment to driving excellence, fostering innovation, and contributing to Bharat's burgeoning entrepreneurial landscape. AVAIVI specialises in providing cutting-edge Audio-Visual Solutions, AI-based Software and Security & Surveillance Technology.

AV Technology: AVAIVI's state-of-the-art audio-visual solutions redefine how information is presented and shared. Our innovative AV solutions include interactive displays, digital signage, audio systems, and immersive multimedia experiences.

AI Software Suite: From predictive analytics to process optimization, our AI-based software applications empower organizations to make informed decisions, streamline operations, and stay ahead in a rapidly evolving digital landscape.

Video Surveillance: AVAIVI's expertise in CCTV security surveillance technology goes beyond traditional monitoring. Our comprehensive solutions encompass advanced camera systems, intelligent video analytics, and remote monitoring capabilities.

Disclaimer: The information provided in this product datasheet is intended for general informational purposes only. While we strive to ensure the accuracy and reliability of the information presented. It is important to note that product specifications and features may change without prior notice.